



# Socks of the Galaxy (4ply)

Pattern by The Loveliest Yarn Company



I haven't seen my first boyfriend in almost two decades but I still listen to *The Eels*, a band I 'caught' from him. This pattern is named for their *Daisies of the Galaxy* album, as both the socks and the album are for when you need something a little different but very easy going.

## Yarn

Banshee Yarns Yak Sock (400m / 100g), 1 skein.  
Makes up to a UK Size 10.  
Shown in: Lichen.

## Needles

2.5mm Double Pointed Needles (DPNs) (or preferred sock needles)

## Notions

Scissors, Darning Needle for ends, 4 Stitch Markers

## Abbreviations

**K:** Knit  
**P:** Purl  
**K2tog:** Knit 2 stitches together  
**P2tog:** Purl 2 stitches together  
**Kfb:** Knit into front and back of stitch (an increase stitch)  
**PM:** Place marker  
**SM:** Slip marker

## Gauge

32 stitches and 44 rounds to 10 cm / 4 ins measured over the lace pattern and stocking stitch, blocked.

## Sizes

To fit foot circumference: **21.5 (22.5, 24)** cm /  
**8.5 (9, 9.5)** ins  
Finished sock size: **19 (20, 21.5)** cm /  
**7.5 (8, 8.5)** ins

**SSK:** Slip Slip Knit (a decrease stitch). Slip the first stitch (next stitch on the left-hand needle) with the right-hand needle as if to knit, slip the second stitch as if to knit, then slide the left-hand needle into the front of both stitches and knit them together.

**RS:** Right side

**WS:** Wrong side

**YO:** Yarn over. Bring the yarn to the front of the work between the needles (if not already there), then take the yarn over the right-hand needle, ready to work the next stitch.

## Pattern

Using a loose method (e.g. long-tail method), cast on 60 (64, 68) stitches.

Join for working in the round, being careful not to twist. Place marker to indicate the start of the round (SOR).

## Cuff

Work 10 rounds in 2x2 rib (k2, p2).

## Leg

Work 2 rounds in stocking stitch (knit every stitch).

## Daisy Panel Set up

### Left Sock Leg

Knit 45 (49, 53) stitches, pm, work Left Lace Chart Panel (LCP) row 1.

### Right Sock Leg

Knit 30 (32, 34) stitches, pm, work Right LCP row 1, pm, knit to end.

### Both socks

Working in stocking stitch and keeping Left/Right LCP correct by working the next row of the chart, work 3 chart repeats in total (72 rounds).

## Heel Flap (HF)

HF Row 1 (RS): Knit the next 30 (32, 34) stitches, turn work.

These stitches will be worked flat to create the heel flap. The remaining stitches stay as they are until required for the gusset.

HF Row 2 (WS): Slip 1 stitch purlwise (yarn in front), p 29 (31, 33) stitches (end of heel stitches), turn work.

HF Row 3: Slip 1 stitch purlwise (yarn in back), k 29 (31, 33) stitches (end of heel stitches), turn work.

Repeat HF Rows 2 & 3 11 (12, 12) more times, then HF Row 2 again. 26 (28, 28) HF rows in total

## Heel Turn (HT)

HT Row 1 (RS): K 18 (20, 22) stitches, ssk, k1, turn work.

HT Row 2 (WS): Slip 1 stitch purlwise (yarn in front), p 7 (9, 11) stitches, p2tog, p1, turn work.  
*1 stitch decreased*

HT Row 3: Slip 1 stitch purlwise (yarn in back), knit to 1 stitch remaining before the gap, ssk, k1, turn work. *1 stitch decreased*

HT Row 4: Slip 1 stitch purlwise (yarn in front), purl to 1 stitch remaining before the gap, p2tog, p1, turn work. *1 stitch decreased*

Repeat HT Rows 3 & 4 **three** more times.

Next row (RS): Slip 1 stitch purlwise (yarn in back), knit to 1 stitch remaining before the gap, ssk, turn work. *1 stitch decreased*

Next row (WS): Slip 1 stitch purlwise (yarn in front), purl to 1 stitch remaining before the gap, p2tog, turn work. *1 stitch decreased*

18 (20, 22) stitches remain

Next Row (RS): K 18 (20, 22) remaining stitches (heel stitches) with RS facing. Do **not** turn work.

## **Gusset Set up**

- Set up Round:**
1. With RS facing, pick up and k 13 (14, 14) stitches through the slip stitch at the start of each heel flap row. Pick up 2 additional stitches between the heel and instep stitches (this will prevent the hole that often occurs). Place a marker after these stitches are picked up to indicate the new SOR\*\*
  2. Keeping the pattern correct for the LCP and working in stocking stitch outside of the panel, work 30 (32, 34) instep stitches. Place a marker to indicate the end of instep stitches and middle of round (MOR\*\*\*)
  3. Pick up and knit 2 stitches between the instep and the heel (matching the other side), then pick up and k 13 (14, 14) stitches through the slip stitch at the start of the heel flap rows.
  4. Knit to end of round, knitting through the back loop of the picked up stitches as you come to them.
- Total stitches in the round: 78 (84, 88) stitches*

You will now have three markers in place: Start of Round (SOR), Middle of Round (MOR) & one extra panel marker.

\*\*SOR For the Right sock, this will now mark the start of the lace stitch panel.

\*\*\*MOR For the Left sock, this will now mark the end of the lace stitch panel

## **Gusset**

**Gusset Round 1:** Keeping the pattern correct for the panel and knitting all other stitches, work all stitches around (for first Round 1 only, knit into the back of picked up stitches on both sides of the instep).

**Gusset Round 2:** Keeping the pattern correct for the panel and knitting all other stitches, work all stitches to the MOR marker. K1, ssk. Knit to three stitches before the SOR marker, k1, k2tog.

Repeat Gusset Rounds 1 & 2 eight (nine, nine) more times until 60 (64, 68) stitches remain.

## **Foot (Both Socks)**

**Foot Round:** Keeping the pattern correct for the LCP and knitting all other stitches, work all stitches around.

Work Foot Round until the foot measures 4.5cm / 1.75ins less than the desired finished length.

When coming to the end of the foot, check where you are in the chart. The aim is to finish after either row 11 or 23. Finish early if necessary and work in stocking stitch to the desired length; or keep the markers in place and work the last rows of the chart into the toe.

## **Toe**

**Toe Round 1:** K1, ssk, knit to 3 stitches before the MOR marker, k2tog, k1, sm, k1, ssk.  
Knit to 3 stitches before SOR marker, k2tog, k1.  
*4 stitches decreased*

**Toe Round 2:** Knit all stitches to end of round.

Repeat Toe Rounds 1 & 2 five (five, six) more times until 36 (40, 40) stitches remain.

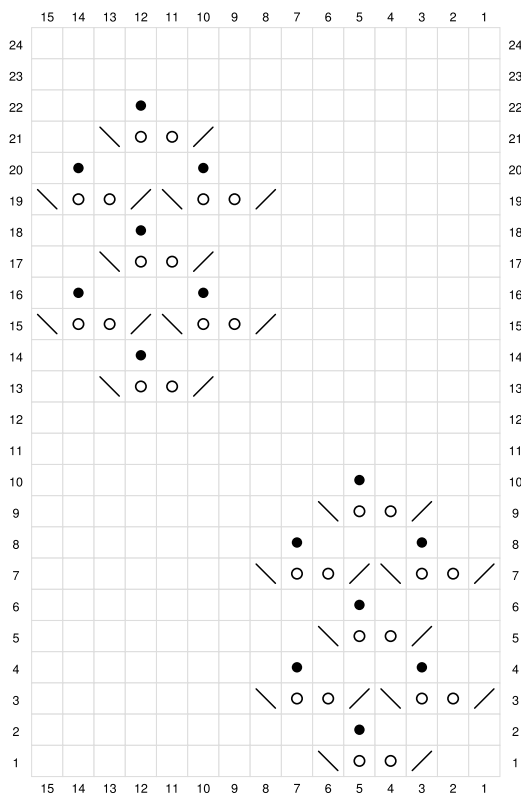
Repeat Toe Round 1 five (six, six) more times until 16 stitches remain.

## **Toe Graft**

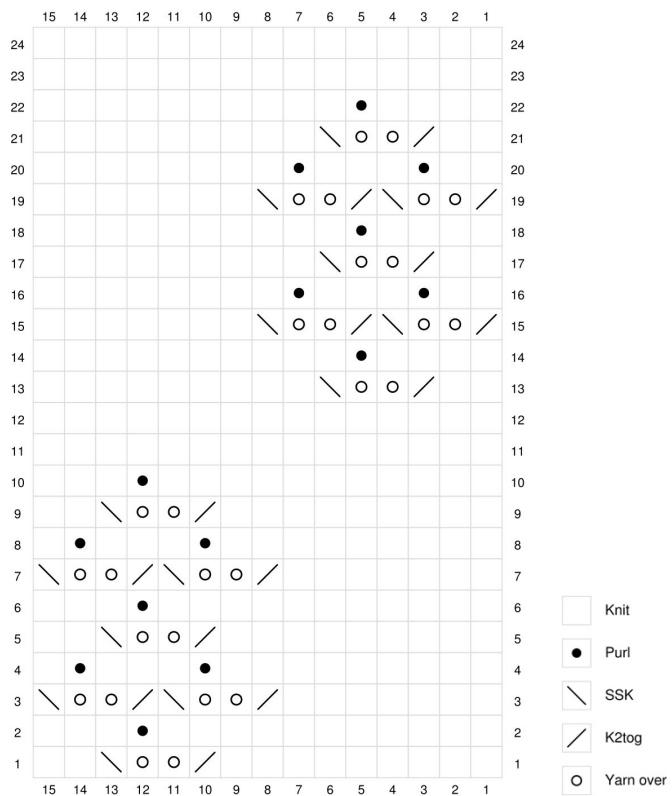
1. Slip the stitches between the SOR marker and the MOR to one needle
2. Move the other stitches to another needle
3. With these two sets of stitches against one another, graft heel stitches to instep stitches using Kitchener Stitch.

## Charts

### Left Lace Chart Panel



### Right Lace Chart Panel



## Written instructions

### Left Lace Panel

- Row 1: k2, k2tog, (yo) x 2, ssk, k9
- Row 2: k4, p1, k10
- Row 3: k2tog, (yo) x 2, ssk, k2tog, (yo) x 2, ssk, k7
- Row 4: k2, p1, k3, p1, k8
- Row 5: k2, k2tog, (yo) x 2, ssk, k9
- Row 6: k4, p1, k10
- Row 7: k2tog, (yo) x 2, ssk, k2tog, (yo) x 2, ssk, k7
- Row 8: k2, p1, k3, p1, k8
- Row 9: k2, k2tog, (yo) x 2, ssk, k9
- Row 10: k4, p1, k10
- Row 11: k15
- Row 12: k15
- Row 13: k9, k2tog, (yo) x 2, ssk, k2
- Row 14: k11, p1, k3
- Row 15: k7, k2tog, (yo) x 2, ssk, k2tog, (yo) x 2, ssk
- Row 16: k9, p1, k3, p1, k1
- Row 17: k9, k2tog, (yo) x 2, ssk, k2
- Row 18: k11, p1, k3
- Row 19: k7, k2tog, (yo) x 2, ssk, k2tog, (yo) x 2, ssk
- Row 20: k9, p1, k3, p1, k1
- Row 21: k9, k2tog, (yo) x 2, ssk, k2
- Row 22: k11, p1, k3
- Row 23: k15
- Row 24: k15

### Right Lace Panel

- Row 1: k9, k2tog, (yo) x 2, ssk, k2
- Row 2: k11, p1, k3
- Row 3: k7, k2tog, (yo) x 2, ssk, k2tog, (yo) x 2, ssk
- Row 4: k9, p1, k3, p1, k1
- Row 5: k9, k2tog, (yo) x 2, ssk, k2
- Row 6: k11, p1, k3
- Row 7: k7, k2tog, (yo) x 2, ssk, k2tog, (yo) x 2, ssk
- Row 8: k9, p1, k3, p1, k1
- Row 9: k9, k2tog, (yo) x 2, ssk, k2
- Row 10: k11, p1, k3
- Row 11: k15
- Row 12: k15
- Row 13: k2, k2tog, (yo) x 2, ssk, k9
- Row 14: k4, p1, k10
- Row 15: k2tog, (yo) x 2, ssk, k2tog, (yo) x 2, ssk, k7
- Row 16: k2, p1, k3, p1, k8
- Row 17: k2, k2tog, (yo) x 2, ssk, k9
- Row 18: k4, p1, k10
- Row 19: k2tog, (yo) x 2, ssk, k2tog, (yo) x 2, ssk, k7
- Row 20: k2, p1, k3, p1, k8
- Row 21: k2, k2tog, (yo) x 2, ssk, k9
- Row 22: k4, p1, k10
- Row 23: k15
- Row 24: k15

## Finishing off & Care

Sew in ends using the darning needle, block (optional) and wear! Follow care instructions on the skein band.

## Stay in Touch

Facebook: <https://www.facebook.com/theloveliestyarncompany>

Instagram: <https://www.instagram.com/loveliestyarnco/>

